



BENEFITS OF THE SÜDTIROL ALTO ADIGE GUEST PASS

The “Südtirol Alto Adige Guest Pass” is offered to guests as a special inclusive service by the host. The Guest Pass promotes sustainable mobility and the use of public transport. One of the aims is to reduce the negative effects of private transport.

The Südtirol Guest Pass



- will be **sent** by e-mail **at check-in or pre-check-in**
- is **bound to the name and period of stay**
- is valid from 00:00 on the day of arrival until 23:59 on the day of departure



- must be **validated** at the start of **each ride**
- is issued exclusively to all overnight guests aged 6 and older
- is not intended for sale

Included Services

The Südtirol Guest Pass entitles you to use local public transport operated by südtirolmobil.



Regional und Regional express trains (R, RV & RE) within South Tyrol and to Trento

- **Brenner railway:** Brenner - Bolzano – Trento
- **Bozen/Bolzano – Meran/Merano**
- **Vinschgau/Venosta valley railway:** Meran/Merano – Mals/Malles
Attention: Partial closures from 16 February 2025
Further information: suedtirolmobil.info/en/news/details/vinschgau-venosta-valley-railway-closure-2025
- **Puster/Pusteria valley railway:** Brixen/Bressanone – Bruneck/Brunico – Innichen-Vierschach/S.Candido-Versciaco
Attention: Partial closures from 15 December 2024
New: Transfer to Pustertal/Val Pusteria only with change at Brixen/Bressanone station
Further information: suedtirolmobil.info/en/news/details/new-pustertal-val-pusteria-railway-line



Local buses

- City buses
- Regional buses
- PostAuto Switzerland
 - Line 811: section Mals/Malles – Müstair/Grenze
- VVT Regiobus
 - Line 273: section Mals/Malles – Pfunds/Kajetansbrücke
 - Line 335: Moos/Moso i.P. – Oberurgl (excl. toll)



Cable Cars

- Renon/Ritten cable-car (Bozen/Bolzano – Oberbozen/Soprabolzano)
- Ritten/Renon narrow gauge railway (Oberbozen/Soprabolzano – Klobenstein/Collalbo)
- Bozen/Bolzano – Kohlern/Colle cable-car
- Mendel/Mendola funicular (St. Anton/S. Antonio – Mendel/Mendola pass)
- Burgstall/Postal – Vöran/Verano cable-car
- Vilpian/Vilpiano-Mölten/Meltina cable-car
- Mühlbach/Rio Pusteria – Meransen/Maransa cable-car (until 24 March 2025)

Excluded services

Special services



- Nightliner
- Long distance trains (e.g. Railjet, Frecciarossa, Italo, Eurocity, Intercity)
- Alpin lines: Seiser Alm/Alpe di Siusi Line 10, 11, 12 | Line 439, 442, 444 in Summer

Dog/pet transport



A separate ticket is required for travelling with pets. **Muzzles are compulsory!**
No ticket is required for guide dogs and small animals that are held in the arms.

Further information: suedtirolmobil.info/en/tickets/fare-system-and-ticket-validation/travelling-with-a-pet



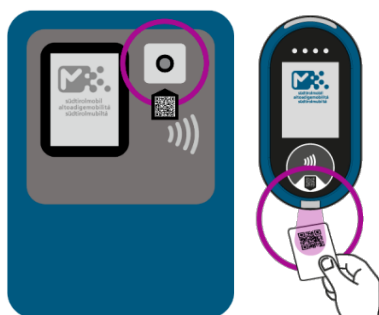
Bicycle transport

A day bicycle ticket is required to take bicycles with you.

Bikes can only be taken on regional trains and buses with bike racks for a limited number of bikes.

Further information: suedtirolmobil.info/en/tickets/fare-system-and-ticket-validation/bring-your-bike

Validation

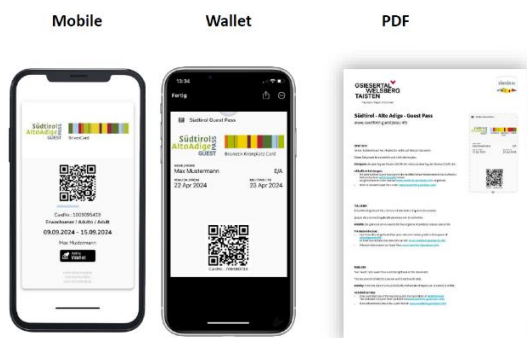


The Guest Pass **must be validated at the start of each journey**. It is validated by scanning the QR code at the blue validation machines. An 'OK' on the display and an acoustic signal confirm successful validation. **Please note that the Guest Pass must not be held too close to the validating machine.**

If travelling by **train**, the Guest Pass must be **validated at the station before boarding**. For train journeys involving a change of train, the Guest Pass must only be validated at the start of the journey.

The Guest Pass is valid at sight on 273 Mals-Pfunds/Kajetansbrücke, 335 Moos i.P.-Obergrugl and 811 Mals-Müstair/Grenze.

Südtirol Guest Pass formats



The digital Südtirol Guest Pass is automatically sent to the guest by e-mail at check-in or pre-check-in, with their name and period of stay.

The following formats are valid:

- Mobile website
- Wallet
- PDF (digital or printout)

Further information about the Südtirol Guest Pass

- Südtirol Guest Pass portal guestpass.suedtirol.info/en
- Timetable information on suedtirolmobil.info and in the suedtirolmobil app
- Conditions of carriage suedtirolmobil.info/en/tickets/conditions-of-carriage



Mobilitätskonsortium – Consorzio mobilità

Rathausplatz 5a – Piazza Municipio 5a

39031 Bruneck (BZ) – Brunico (BZ)

Tel. 0474 552760

E-Mail: info@moko.bz.it